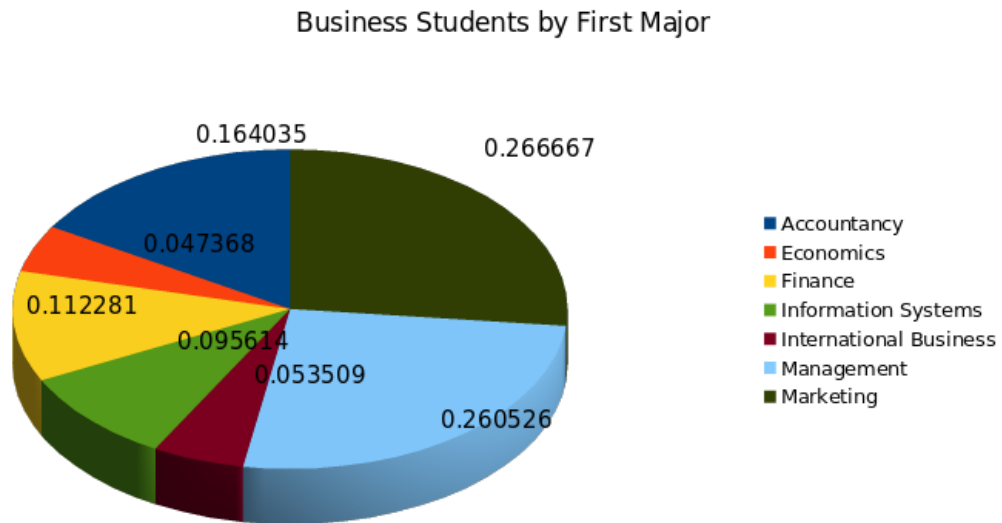




3. Walter Hickey once said, “Pie charts are the Nickelback of data visualizations.” In the following questions, analyze the meaning of this statement in the context of the data visualization below.

Source: @WaltHickey Twitter post, June 14, 2013

<https://twitter.com/WaltHickey/status/345646754089291777>



(a) (20 points) Describe four problems with the visualization above, and for each problem suggest a different chart type or different data visualization decision to mitigate the problem.

(b) (10 points) Sketch your own chart in the space below with a pen or pencil that more effectively communicates the same information given in the pie chart above.

4. (20 points) Identify four problems with the data visualization below. For each problem suggest a different chart type or different data visualization decision to mitigate the problem.

